

# Film Identification and Manufacturing Information

Polaroid Land film manufactured in U.S.A.

It is possible to determine the film type, date of manufacture, and, in some cases, the position of the picture in the roll or pack of film, by examining the information printed on the back of a Polaroid Land print. The following tells you how to decode this information, based on the film type in question. The manufacturing code also contains other numbers and/or letters identified as "machine and shift information." This breaks down into manufacturing data significant only to our internal systems and procedures.

## Year Code

With SX-70 film manufactured before June, 1980, the double digit clearly spells out the year of manufacture.

With all other film, and SX-70 film manufactured after June, 1980, the single digit indicates the year within an unspecified decade. The "Additional Information" in each section should help you determine the proper decade.

If you have any questions about this material, call Polaroid Customer Service toll free at 800-225-1384 from anywhere in the continental U.S.A. except Massachusetts and Alaska. From those states, call collect (617) 864-4568.

Month Code	Pack/Roll/4x5	SX-70
Jan.	A	01
Feb.	B	02
March	C	03
April	D	04
May	E	05
June	F	06
July	G	07
Aug.	H	08
Sept.	J ("I" omitted)	09
Oct.	K	10
Nov.	L	11
Dec.	M	12

# Polaroid Land 4x5 Film

Prior to 1970, tabbed corners here.

Manufacturing Code. The month of manufacture is the first letter of the code; the year is the first number. The film type is identified by the number preceding the letter in the middle of the code: 7=Type 57, 2=Type 52, 5=Type 55, 8=Type 58.

## Interpreting the Manufacturing Code

B	7	493	7	C50951A
Month (Feb.)	Year (1977)	Machine and Shift Information		Film Type

POLAROID®

B74937/C50951A

## Additional Information

Film Type	Introduced	Notes
Type 52 b&w	1958	
Type 53 b&w	1958—disc. 1961	
Type 57 b&w	1961	
Type 55 pos/neg	1961	
Type 58 color	1963	Renamed Type 58 Polacolor 2, 1976
Type 510 b&w	1964—disc. 1967	high contrast
Type 51 b&w	1967	high contrast

# Polaroid Land Pack Film

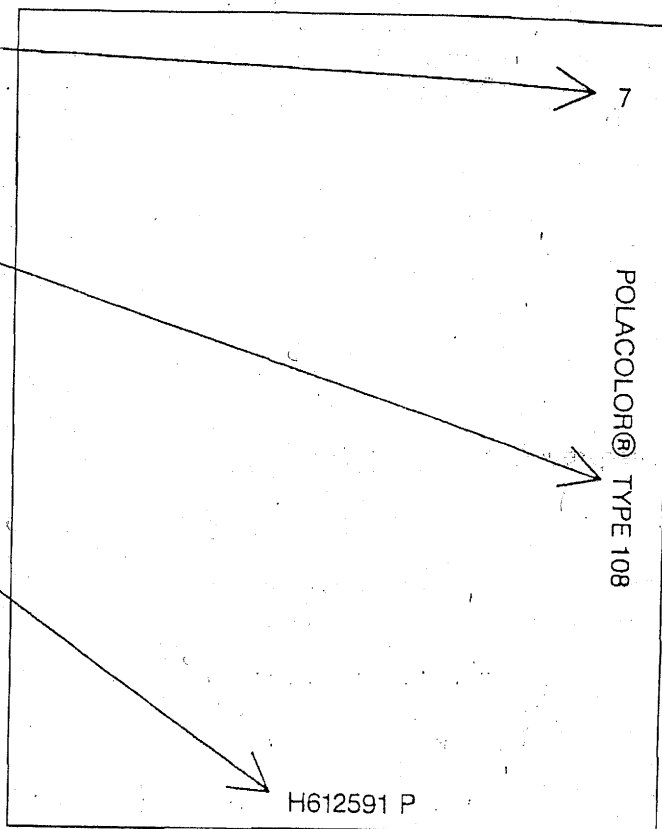
Exposure Number

Film Type appears after 1968. Before that date, all color pictures were Type 108; all black and white Type 107.

Manufacturing Code. The month of manufacture is the first letter of the code; the year is the first number.

## Interpreting the Manufacturing Code

H	6	12591	P
Month (Aug.)	Year (1976)	Machine and Shift Information	Film Type



## Additional Information

Film Type	Format	Introduced	Notes
<b>Amateur Films</b>			
107 b&w	3¼ x 4¼	1963	prints require coating
108 color	3¼ x 4¼	1963	renamed Type 108 Polacolor 2, 1975
87 b&w	3¼ x 3¾	1971	coaterless
88 color	3¼ x 3¾	1971	renamed Type 88 Polacolor 2, 1976
105 pos/neg	3¼ x 4¼	1974	renamed Type 665 1977
<b>Industrial/Professional Films</b>			
667 b&w	3¼ x 4¼	1977	coaterless
084 h&w	3¼ x 4¼	1977	prints require coating

# Polaroid Land Roll Film

Film Type

42

2

Exposure Number

POLAROID

Prior to 1958, deckle appeared on all four borders

Manufacturing Code: The month of manufacture is the first letter of the code; the year is the first number.

E046107 2

## Interpreting the Manufacturing Code

E 0 46107 2

Month (May)	Year (1960)	Machine and Shift Information (1970)	Film Type (1980)
----------------	----------------	--	---------------------

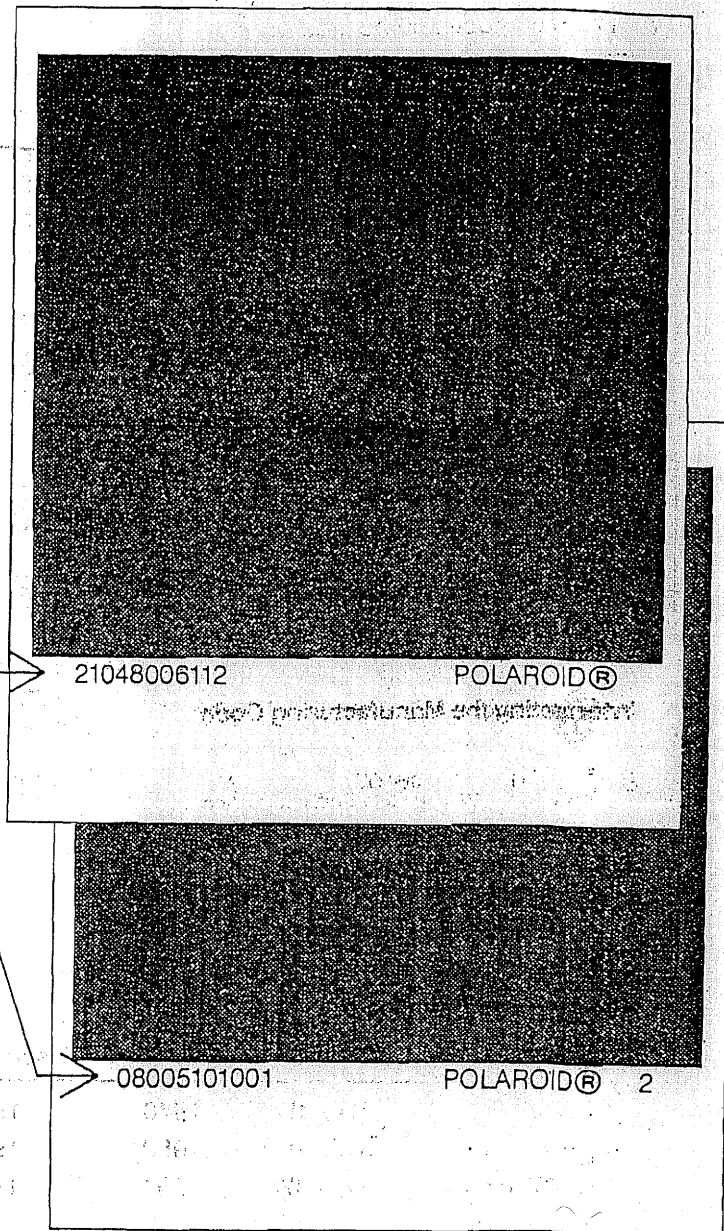
## Additional Information

Film Type	Format	Introduced	Discontinued	Notes
Type 40	3¼ x 4¼	1948	1950	sepia-toned
Type 41 b&w	3¼ x 4¼	1950	1959	orthochromatic
Type 31 b&w	2½ x 3¼	1954	1958	
Type 42 b&w	3¼ x 4¼	1955		panchromatic
Type 32 b&w	2½ x 3¼	1955	1979	
Type 43 b&w	3¼ x 4¼	1955	1958	
Type 44 b&w	3¼ x 4¼	1956	1963	
Type 46 b&w	2¼ x 2¼	1957	1964	transparency
Type 46-L b&w	3¼ x 4	1957		transparency
Type 47 b&w	3¼ x 4¼	1959		
Type 37 b&w	2½ x 3¼	1959	1979	
Type 146-L b&w	3¼ x 4	1961		transparency
Type 410 b&w	3¼ x 4¼	1961		for high-speed recording
Type 413 b&w	3¼ x 4¼	1964	1969	infrared
Type 48 color	3¼ x 4¼	1963	1976	
Type 38 color	2½ x 3¼	1963	1969	
Type 20/20C b&w	2½ x 3¼	1965	1979	coaterless after 1970

# Polaroid SX-70 Land Film

The film type is not printed but is easy to identify because of the unique format. All prints are 3 1/2 x 4 1/4 overall, with a color image area 3 1/8 x 3 1/8 (black back):

Manufacturing Code.



## Interpreting the Manufacturing Code

Before June, 1980:

21	04	80	06112
Prototype	Month (April)	Year (1980)	Machine and Shift Information

After June, 1980:

08	0	05101001	POLAROID®	2
Month (Aug.)	Year (1980)	Machine and Shift Information	Prototype	

## Additional Information

SX-70 film was introduced in October, 1972. Some early manufactured film was produced with only 9 digits in the manufacturing code. In that film, the first two digits represented the month, the next two, the year of manufacture.